

STOP MEANS STOP



www.iWalkSafe.org

It is not your decision to determine whether a school bus is worth stopping for.

You stop per the law, no exceptions.

Ignoring these rules risks kids' lives.



**Flashing reds
with stop signs extended**

STOP.



Flashing amber

Some states require drivers not to pass a moving bus when amber lights are flashing.

We recommend that all drivers and bus operators adopt this practice, plus, we recommend that states adopt similar amber light restrictions into statutory law.



Flashing red

The bus is about to stop. Keep your distance and do not pass.

Some states require drivers to remain a specific distance behind a moving bus with flashing reds. Check the statutes of your state before driving.

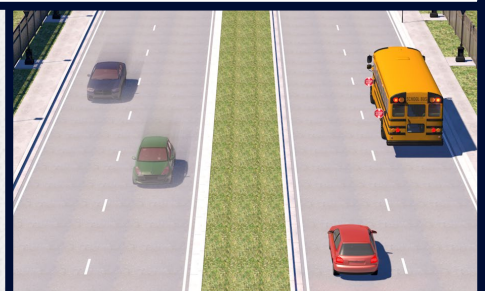


This median is wider than five feet, but it is paved and not raised. Opposing traffic must stop.

In most states, drivers on BOTH sides of the roadway are generally required to stop, with limited exceptions.

In Florida, this applies on all roads - with these specific exceptions:

Opposing traffic may continue *only* when a street has a **barrier or raised median** - or an **unpaved space wider than five feet.**



This median has a raised area with curbs on each side. Opposing traffic may continue.

WHEN IN DOUBT  FOR THE SCHOOL BUS.



UNIVERSITY OF MIAMI
MILLER SCHOOL
of MEDICINE



The WalkSafe Program is brought to you in part by:



WalkSafe Program
Dominion Tower
1400 NW 10th Avenue
Locator code: (R-48)
Miami, Florida 33136

Website:
Email:
Phone:

www.iWalkSafe.org
walksafe@miami.edu
(305) 243-8115

@iWalkSafe